

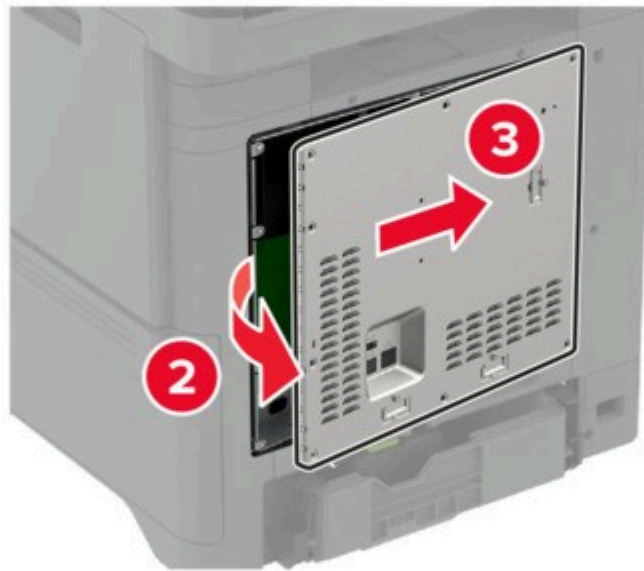
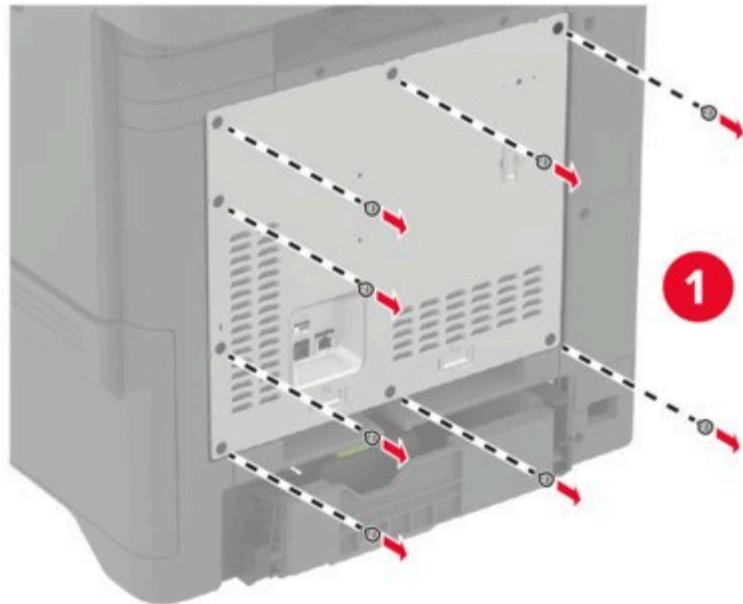
# Installing the intelligent storage drive

Expand the memory capacity of your printer to print complex jobs and collate large print jobs. When a hard disk and an intelligent storage drive are both installed, the printer always prioritizes the hard disk to store user data.

To avoid the risk of electrical shock, if you are accessing the controller board or installing optional hardware or memory devices sometime after setting up the printer, then turn the printer off, and unplug the power cord from the electrical outlet before continuing. If you have any other devices attached to the printer, then turn them off as well, and unplug any cables going into the printer.

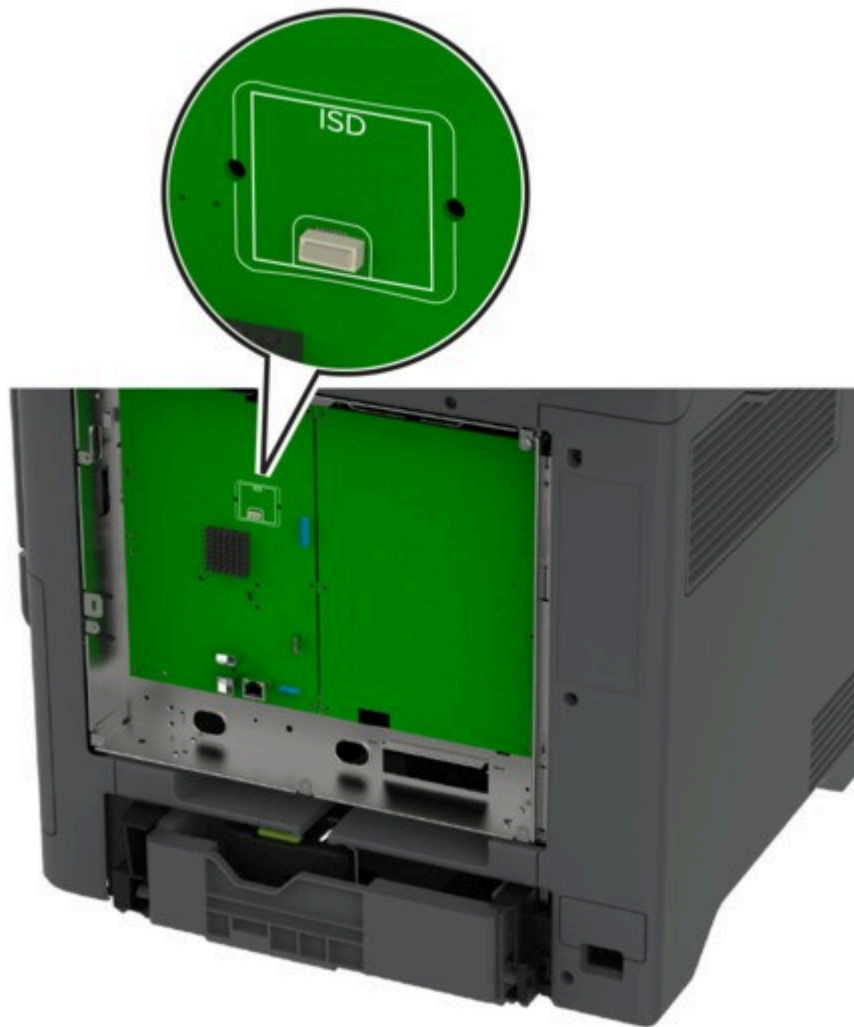
1. Turn off the printer, and then unplug the power cord from the electrical outlet.
2. Using a flat-head screwdriver, remove the controller board shield.  
Controller board electronic components are easily damaged by static electricity. Touch a metal surface on the printer before touching any controller board components or connectors.

# Printzone.

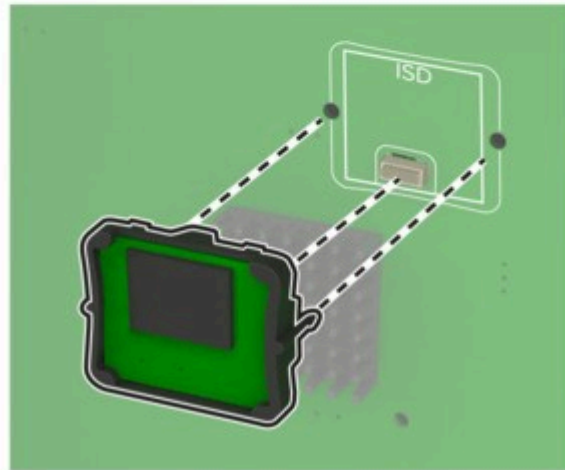
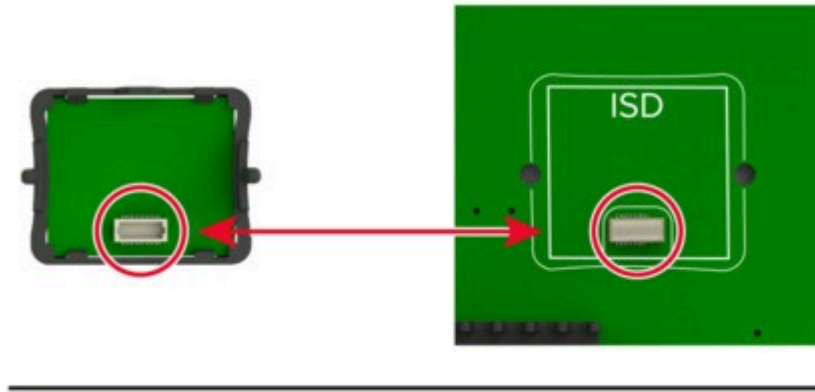


3. Unpack the intelligent storage drive (ISD).  
Avoid touching the connection points along the edge of the card.

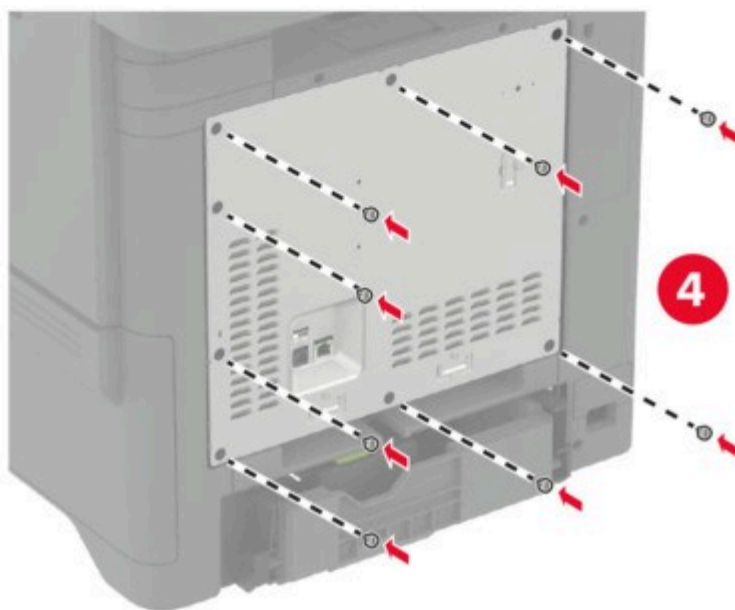
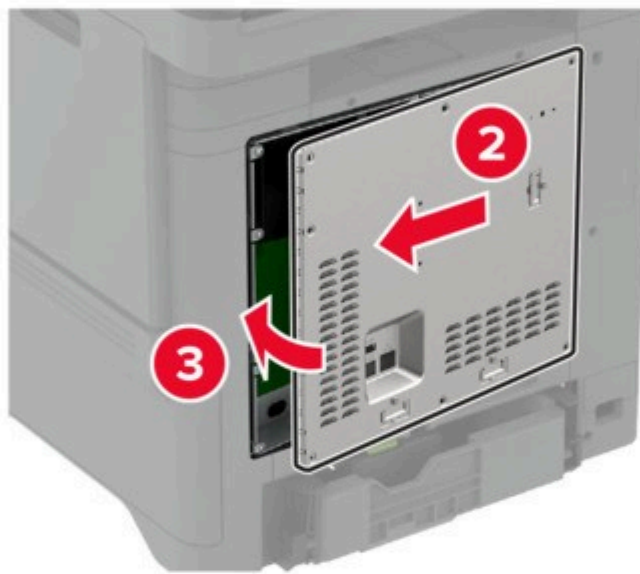
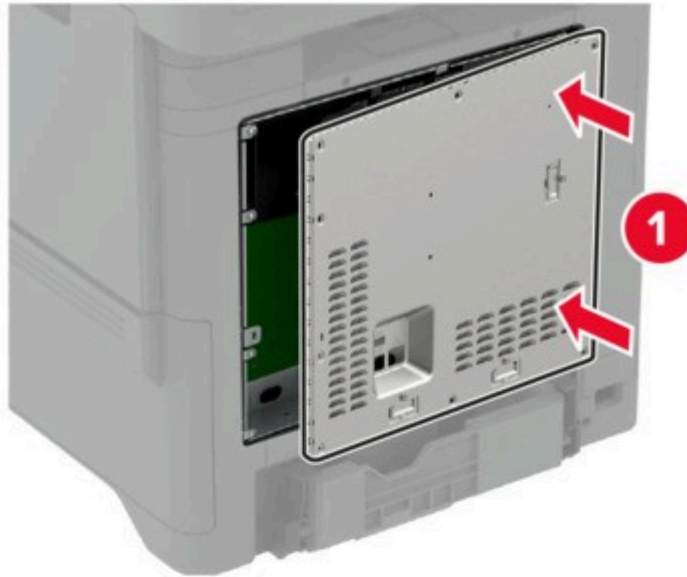
4. Locate the ISD connector.



5. Insert the card to the ISD connector.



6. Attach the controller board shield.



7. Connect the power cord to the electrical outlet, and then turn on the printer.

To avoid the risk of fire or electrical shock, connect the power cord to an appropriately rated and properly grounded electrical outlet that is near the product and easily accessible.